

# Cemetery Maps

We can provide you with a digital, interactive map of your cemetery which can link to electronic burial records, photos and documents. You will be able to view your cemetery, zoom in and out, pan around, print out sections and also click on a single plot to bring up all the burial details.

## Minimal disruption

We create digital cemetery maps from photocopies, photographs and scanned images of existing material and we also use high quality aerial imagery from specialist suppliers. If there are no useable maps available, we can arrange for a cemetery to

be surveyed by ourselves. Whatever methods are used, we try to minimise impact on you and your staff.



## Cemetery Maps

- » Maps created from surveys or existing maps
- » Aligned/matched to latest level OS data, aerial imagery
- » Easy to use software
- » Maps integrate with cemetery management software



Licensed Partner

**Pear Technology Services Ltd.**

Tel: 023 9249 9689 Web: [www.peartechnology.co.uk](http://www.peartechnology.co.uk)



## Description

Not to be confused with cleaned-up reproductions of existing maps, every plot on a Pear Technology map is an individual entity that can be moved, deleted, coloured, re-sized and labelled as required.

The maps remain crystal clear even at the largest magnification whereas those that have been scanned and re-touched will become indistinct just as a photograph does under a powerful magnifying glass. This is important because it means you can produce a detailed map of just a small part of the cemetery and it will remain completely sharp.

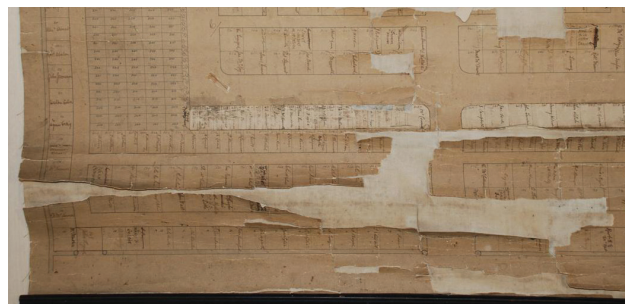
Pear Technology can produce crisp, modern maps from the poorest existing material. They are easy to keep updated using our PT-Mapper software or your own GIS/ CAD systems, and because they can be readily converted into different formats, the maps are likely to be as future-proof as the copies they replace.

The maps are supplied with all plots numbered as they are in your current records and they can be linked electronically to third party cemetery management systems, Access databases and Excel spreadsheets through our MapLink software.

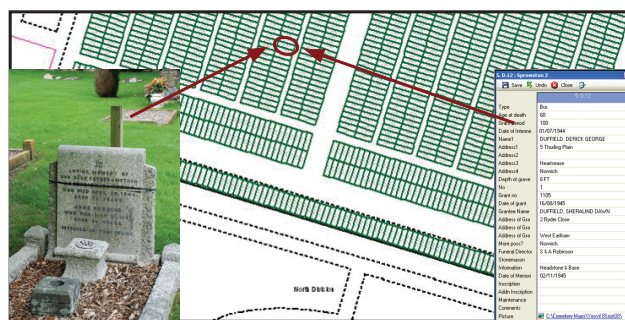
## System Requirements

1.6GHz processor or faster, Windows operating system, 2GB RAM, good quality separate video card with min. 128MB on-board memory. Reasonable quality mouse.

## From this:



## to this:



Maps remain crystal clear at all scales

## Further information

For further information and examples of finished maps or to arrange a no-obligation on-site demonstration, please call us on **023 9249 9689** or email us at **info@peartechology.co.uk**.



Licensed Partner

## Pear Technology Services Ltd.

Tel: 023 9249 9689 Web: [www.peartechology.co.uk](http://www.peartechology.co.uk) Email: [info@peartechology.co.uk](mailto:info@peartechology.co.uk)

Pear Technology Services Ltd., Unit 31 Broadmarsh Business Centre, Harts Farm Way, Havant, PO9 1HS

